

Installing and Removing Scannerz™

Supporting Hardware and Operating Systems

Scannerz supports the following hardware platforms and operating systems:

- All PowerPC™ G4 and G5 systems with at least 512MB ram and at least 20MB of free disk space running Mac OS® 10.5 (Leopard)
- All Intel® based Macintoshes with at least 512MB of RAM and at least 20MB of free disk space running MacOS® 10.5 (Leopard), Mac OS 10.6 (Snow Leopard), or MacOS 10.7 (Lion).

Scannerz is intended to be used with normal user hard drives connected directly to an end users system via a standard logic board interface bus, a USB interface, or a FireWire interface.

Scannerz does not support the following:

- RAID Units
- Network Drives
- USB 1.0 Devices
- Drives connected via Xsan
- Optical drives of any type
- Old drives, such as MFM or RLL drives

Scannerz may be used to evaluate electronic disks (SSDs, Flash Drives, etc) but some of the calculations Scannerz uses, such as Relative Performance Indices, may be meaningless or erratic. Future releases of Scannerz will provide more support, particularly for SSDs as the devices become more prevalent.

Installing Scannerz on Your Hard Drive

Preliminaries

Scannerz makes use of some folders and utilities normally installed on the operating system. If these are not present, *Scannerz* will not operate properly. It is very rare for any of them to be missing, but if problems occur, please verify that the following list of items below are present:

- **TextEdit.app**, which is normally in the Applications folder. Scannerz uses this to optionally open up a scan report when a full, normal scan has been completed.
- **diskutil**, which is normally in the /usr/sbin directory. Scannerz uses diskutil to compare drive data seen by the OS against that seen by Scannerz, since it's possible some drives may have partitioning schemes not visible to diskutil.
- **mdutil**, which is located in the /usr/bin directory. During the scanning process, Scannerz disables Spotlight indexing and once done re-enables it using this utility.
- **The “Documents” folder** under the users home directory. Scannerz will deposit all generated reports and log files in this directory.
- **The “Application Support” folder** underneath the users “Library” folder. Scannerz will create a folder called “Scannerz” where it will store hard drive profile data.

Under most circumstances, none of these items should be missing. We have, however, encountered some system administrators who eliminate some of these tools (particularly diskutil and mdutil) to prevent less knowledgeable users from accidentally damaging their systems.

Scannerz, in all modes of operation, requires administrative or root level access to your system because it does low level scanning “underneath” the operating system layer. Administrative access will be required to install the product on a hard drive as well.

Installing the Software

The software is typically obtained via download from our web site. The software is in PKG format wrapped in a disk image with a DMG extension. To install the software, perform the following steps:

Locate the appropriate DMG file. It will have the exact same name as identified in the list below, but the extension will be “.dmg” instead of “.pkg”. Once double clicked on, the PKG file will be exposed. Our current list of distributed packages and their package names are shown in the table on the next page.

Product Name	PKG Name	Description
Scannerz with FSE-Lite	ScannerzWithFSELite.pkg	Standard Scannerz with FSE-Lite release.
Scannerz with FSE	ScannerzWithFSE.pkg	Scannerz with the enhanced, full featured version of FSE
FSE	FSE.pkg	The standalone full featured version of FSE
SpotOff with Spot-O-Meter	SpotOffWithSpot-O-Meter.pkg	Standard release of SpotOff with Spot-O-Meter
Scannerz Demo	ScannerzDemo.pkg	The Scannerz demo package with limited functionality.
FSE Demo	FSEDemo.pkg	The FSE demo package with limited functionality.

List of Available Packages

For the purposes of this set of instructions, we will use the package named “ScannerzWithFSE.pkg” but the procedures will be identical for each package. Find the package. It should appear wherever you saved the download as follows:

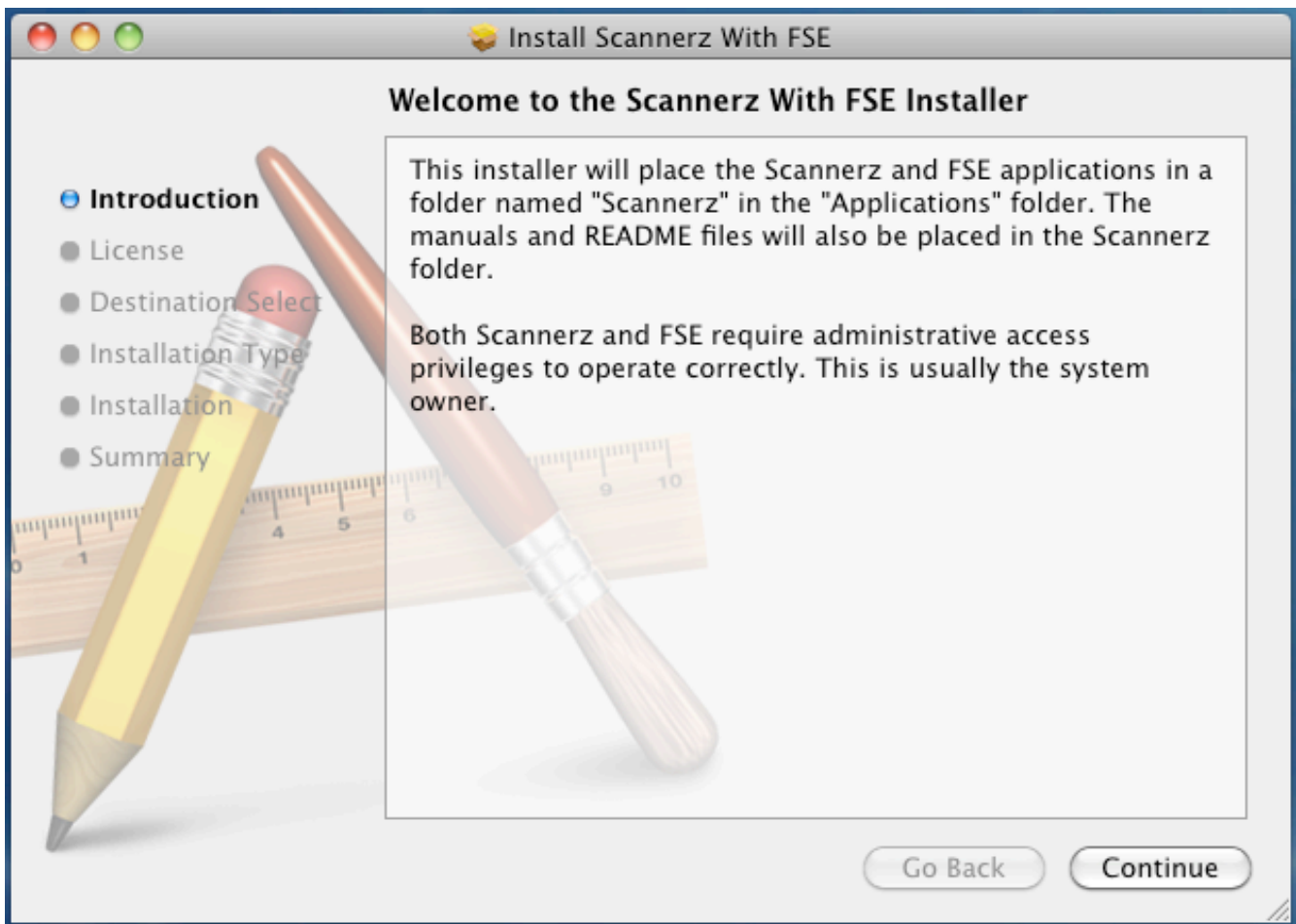


ScannerzWithFSE.pkg

Typical Installation Package Icon

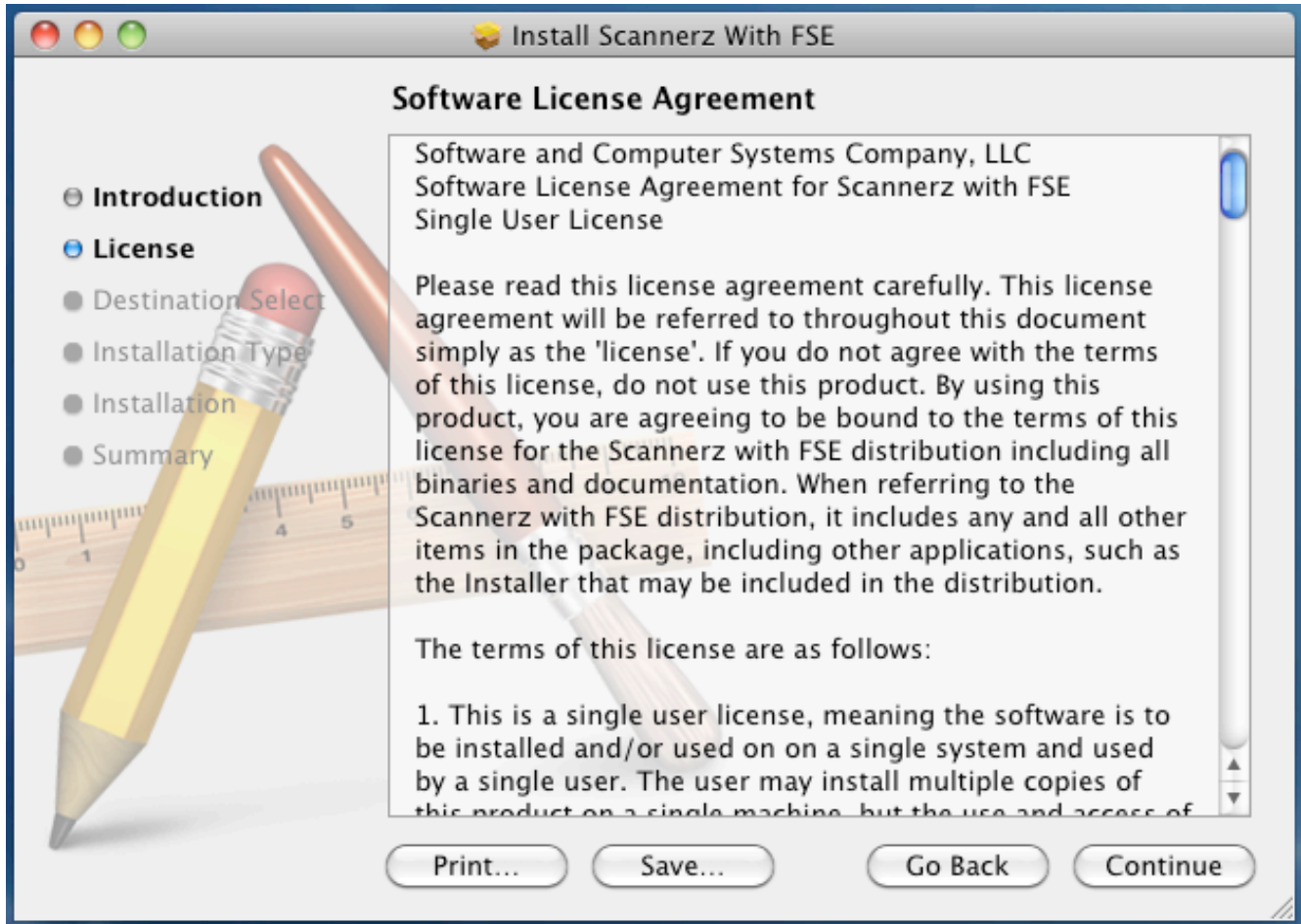
Double click on this icon and the installation will begin. The following pages will describe the installation procedures, which will essentially be identical for all packages SCSC is releasing commercially.

When the installer starts, a dialog window similar to the following will appear. Read the the text in the highlighted region because it may include information about the destination of the package and any other notes that may be important. Keep in mind that what's shown below is an example, so the text as well as the package name will likely be different.



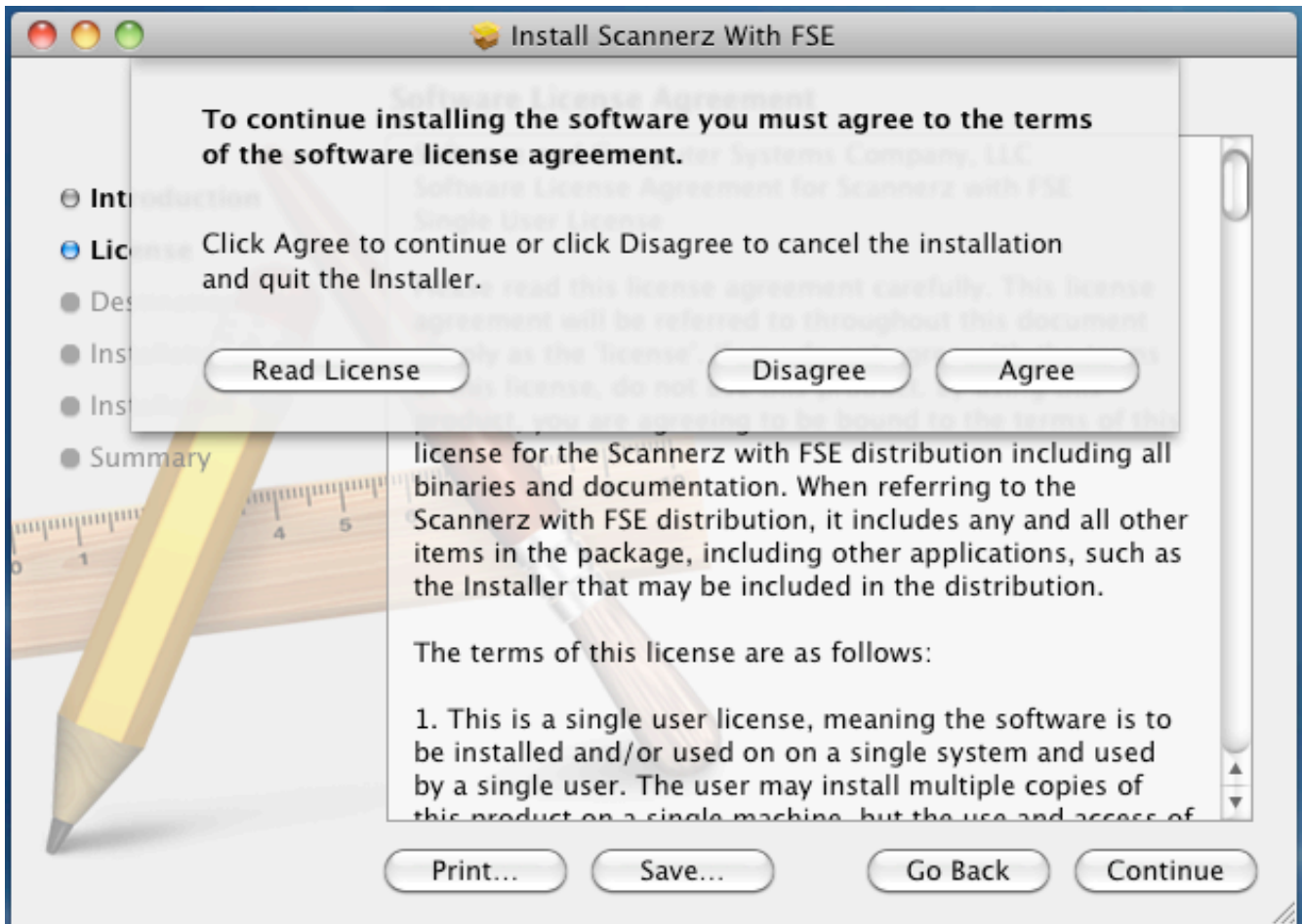
After reading this, click on the “Continue” button. A new window will appear displaying the license for the product.

The license will now appear. Please review it before continuing. The contents of the license may also be printed or saved to a file if so desired, and they can typically be obtained from the SCSC web site as well.



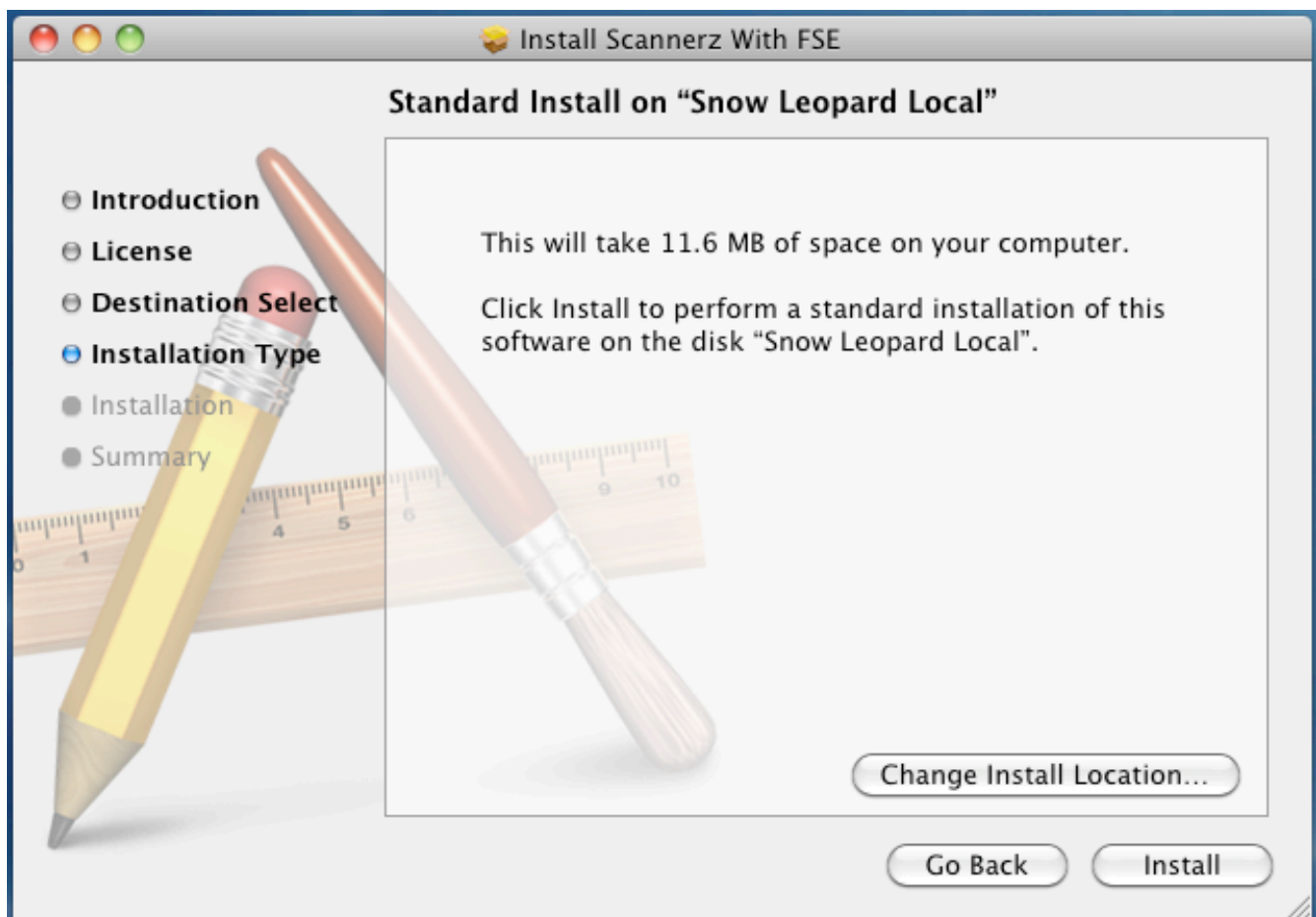
After reviewing the license, click on the “Continue” button. You will be asked in the next installer phase to accept or reject the license.

The following dialog appears asking whether or not the terms of the license are acceptable. If they are, click on the “Agree” button and this installation will continue. If you click on the “Disagree” button, the installer will halt and the user will not be able to install the software.



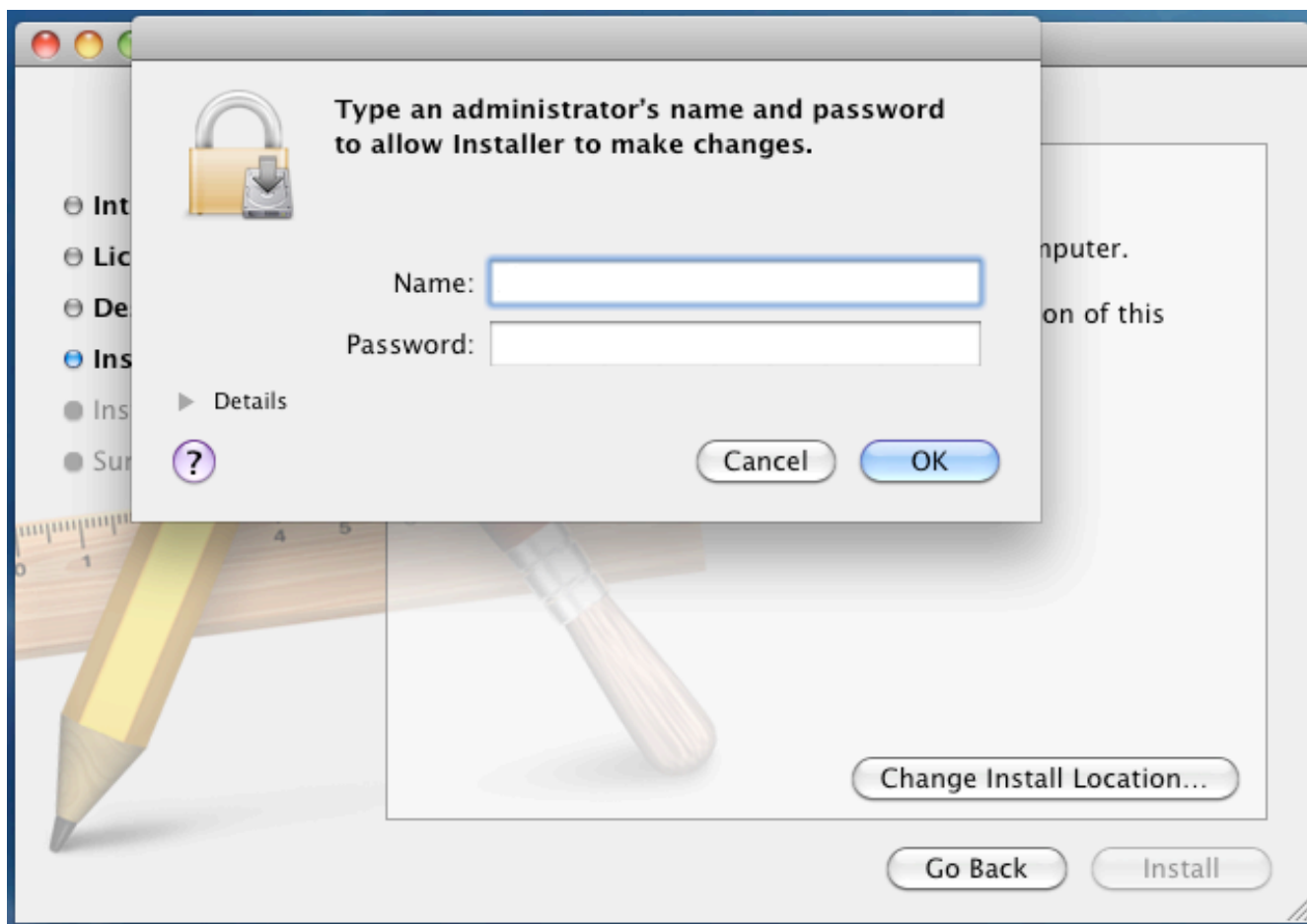
Assuming that the “Agree” button is selected, then the installer will continue with the installation.

After agreeing to the terms of the license, you will be given the option to change the installation location. On some systems with more than one hard drive, instead of showing the dialog below, the user will be presented with a list of drives to select from. If this occurs, select the current drive serving as the root drive of the system. The name of the volume as shown in the example below is “Snow Leopard Local” but this will almost certainly be different on other systems.



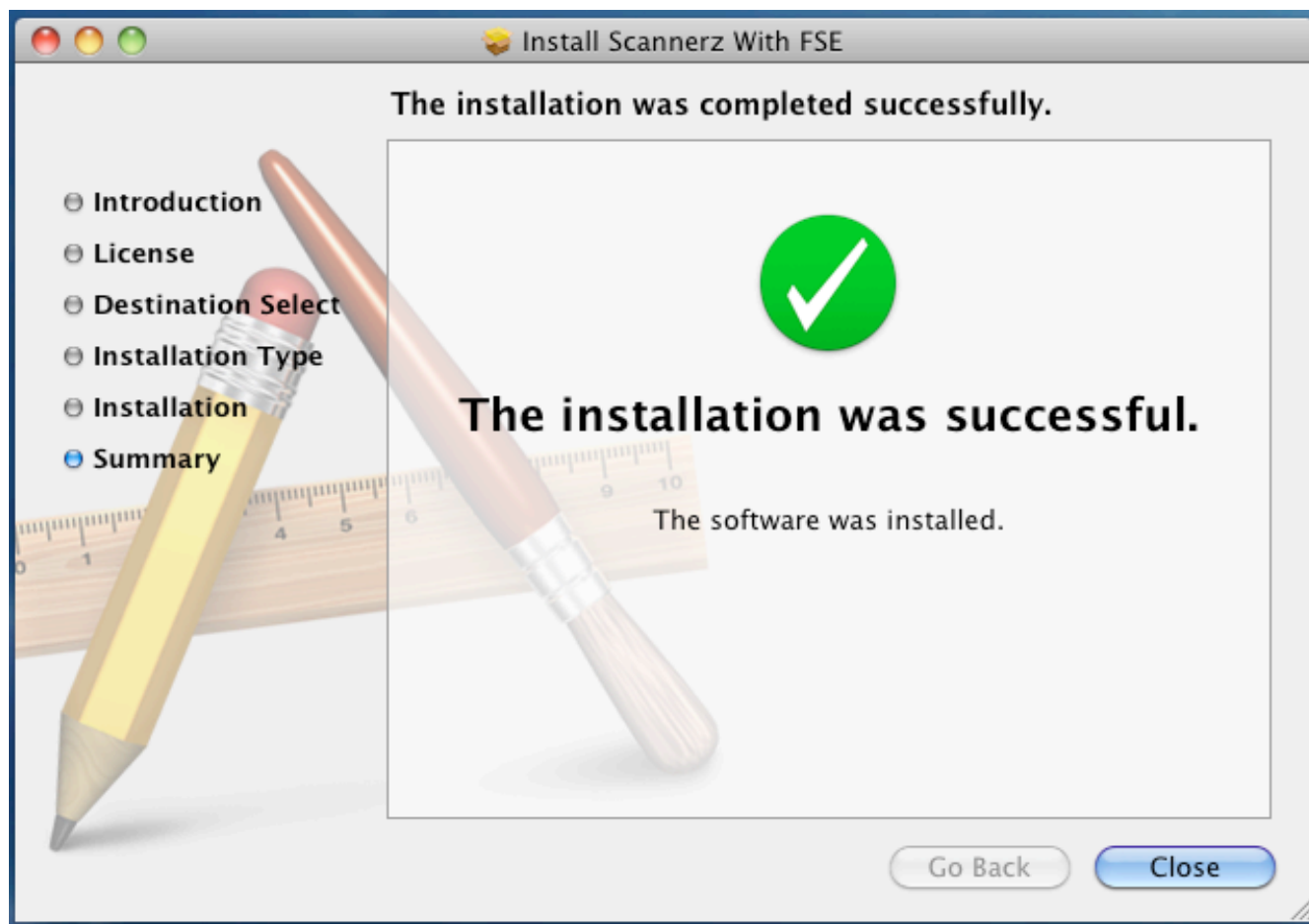
After selecting your installation location, click on the “Install” button, and the name of an administrator and password will need to be supplied.

For most systems, the administrator is the owner of the system, and the “Name” field will be filled in automatically.



Fill in the appropriate information and click on the “OK” button. The installer will then proceed to install the product on the system until it's complete.

When the installer is complete, it will display the following. In the event that the installation failed, click on the “Window” menu option for the installer and review the installation log. In most cases, installations fail due to a permissions problem.



With the installation complete, click on the “Close” button and continue reviewing the manuals to learn how to use the products.

Removing Scannerz From Your Hard Drive

Scannerz does not put any unusual “hooks” into the operating system or launch daemons, thus the only thing that one needs to do to remove Scannerz from their system is delete the files and directories that Scannerz uses to store data as well as hold the applications.

To remove Scannerz from your system, do the following:

1. Navigate to the Applications folder and locate the Scannerz folder in it.
2. Drag the Scannerz folder to the trash. You will need administrative user ID and password to do this.
3. Navigate to your home folder. When there, open up the folder called “Library”.
4. When in the “Library” folder, navigate to the folder called “Application Support” and open it.
5. In the “Application Support” folder will be a folder named “Scannerz.” Drag this folder to the trash.
6. Navigate back to the “Library” folder.
7. Navigate to the folder named “Preferences.”
8. Find the file named “com.scsc-online.Scannerz.plist” and move it to the trash.

Scannerz has now been completely removed from your hard drive.